

BOM Table									
ITEM NO.	PART NUMBER	Rev.	Description	Material	FlameRating	Color	DC-59FMMR/QTY.	DC-59FMMR*01/QTY.	DC-59FMMR*03/QTY.
1	DC-57BFMBY	-.04	BASE	ABS	UL94-5VA	BLACK	1	-	-
2	DC-85CMBR	-.03	COVER: RECESSED SMOOTH	ABS	UL94-5VA	BLACK	1	-	-
3	DC-57BFMBY*01	-.04	BASE	ABS	UL94-5VA	GRAY	-	1	-
4	DC-85CMBR*01	-.03	COVER: RECESSED SMOOTH	ABS	UL94-5VA	GRAY	-	1	-
5	DC-57BFMBY*03	-.04	BASE	ABS	UL94-5VA	BONE	-	-	1
6	DC-85CMBR*03	-.03	COVER: RECESSED SMOOTH	ABS	UL94-5VA	BONE	-	-	1
7	SCREWS-DC2-BR	-	ASSEMBLY SCREW				6	6	6

F

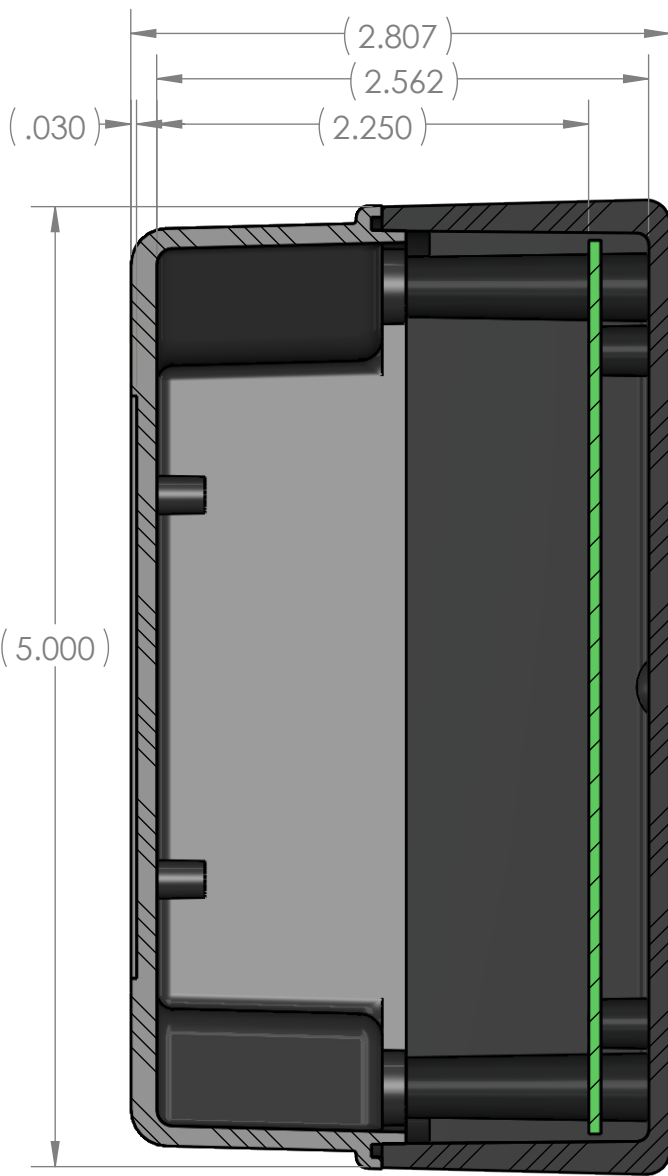
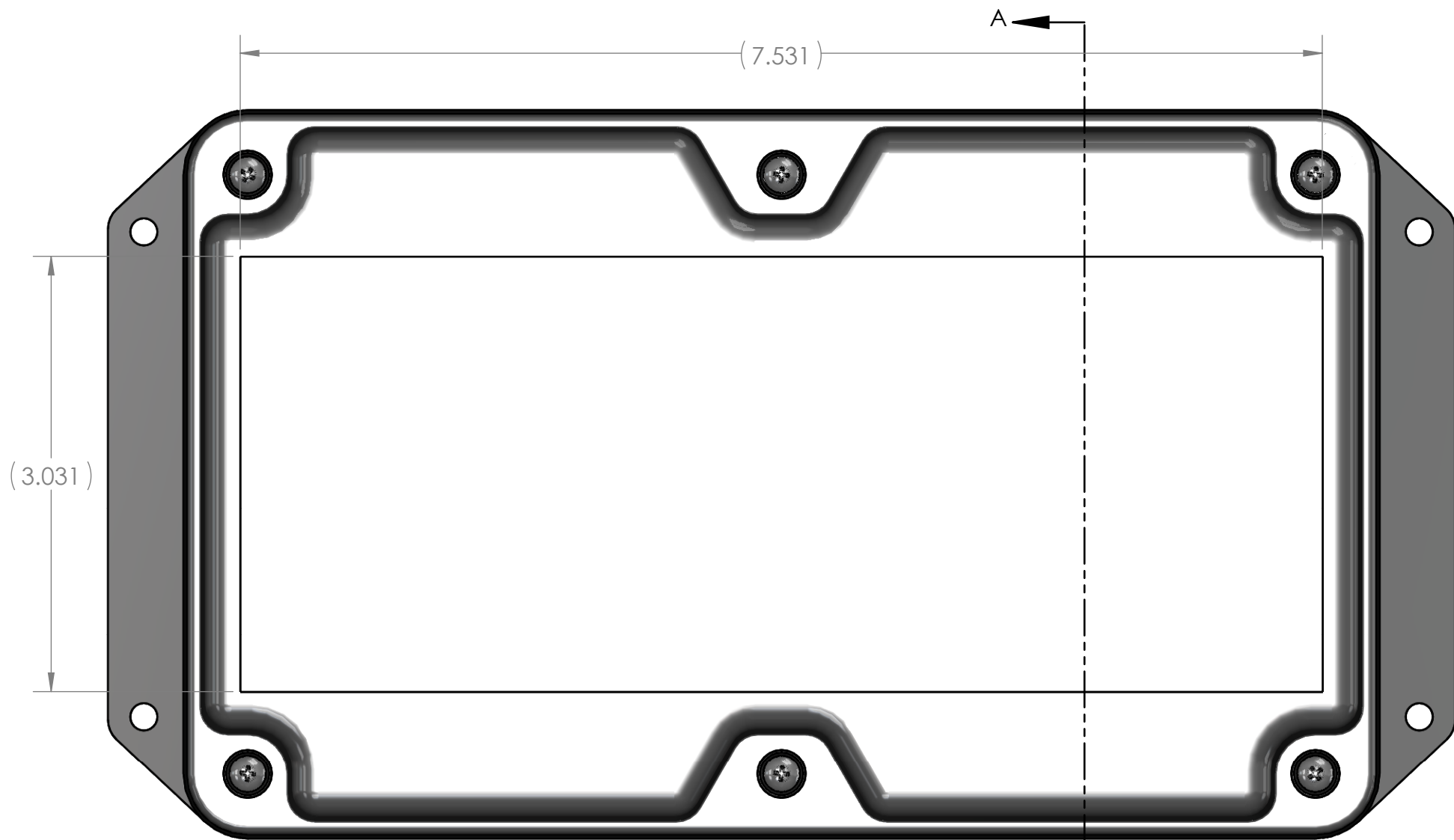
E

D

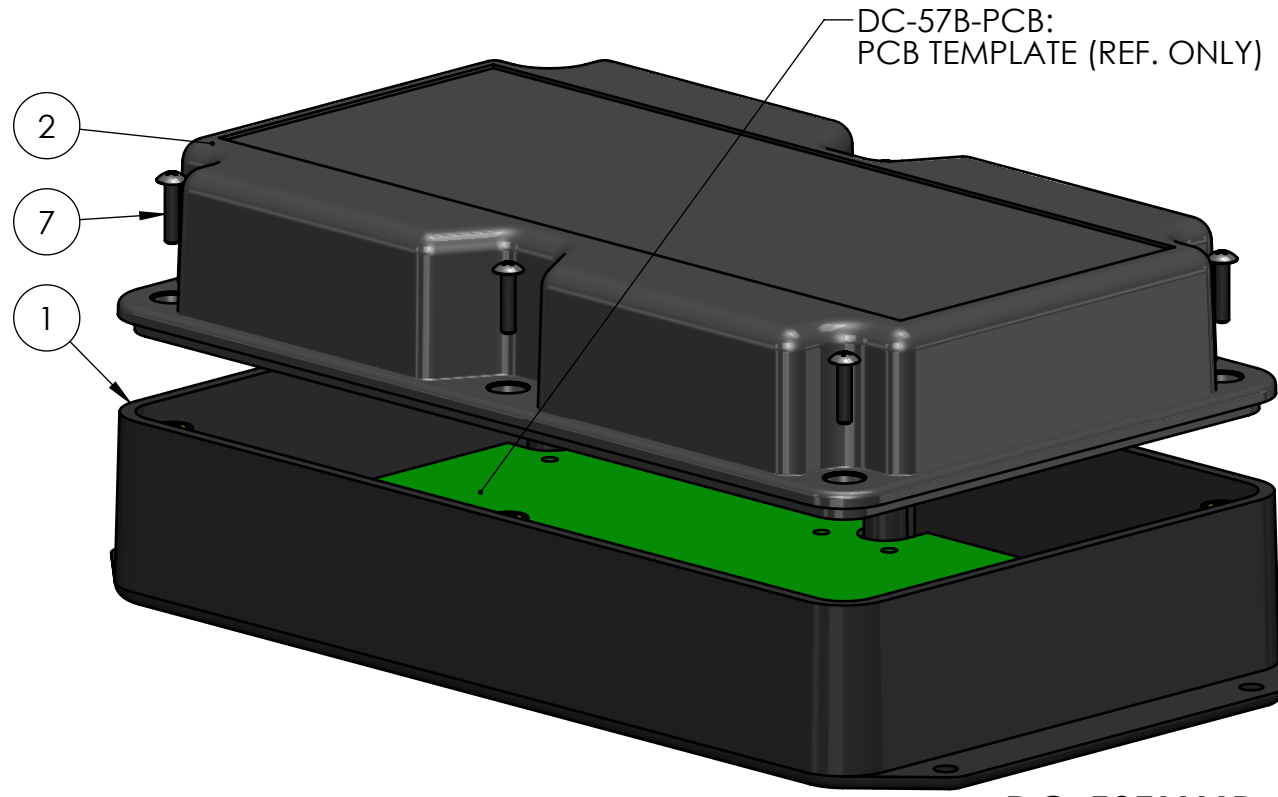
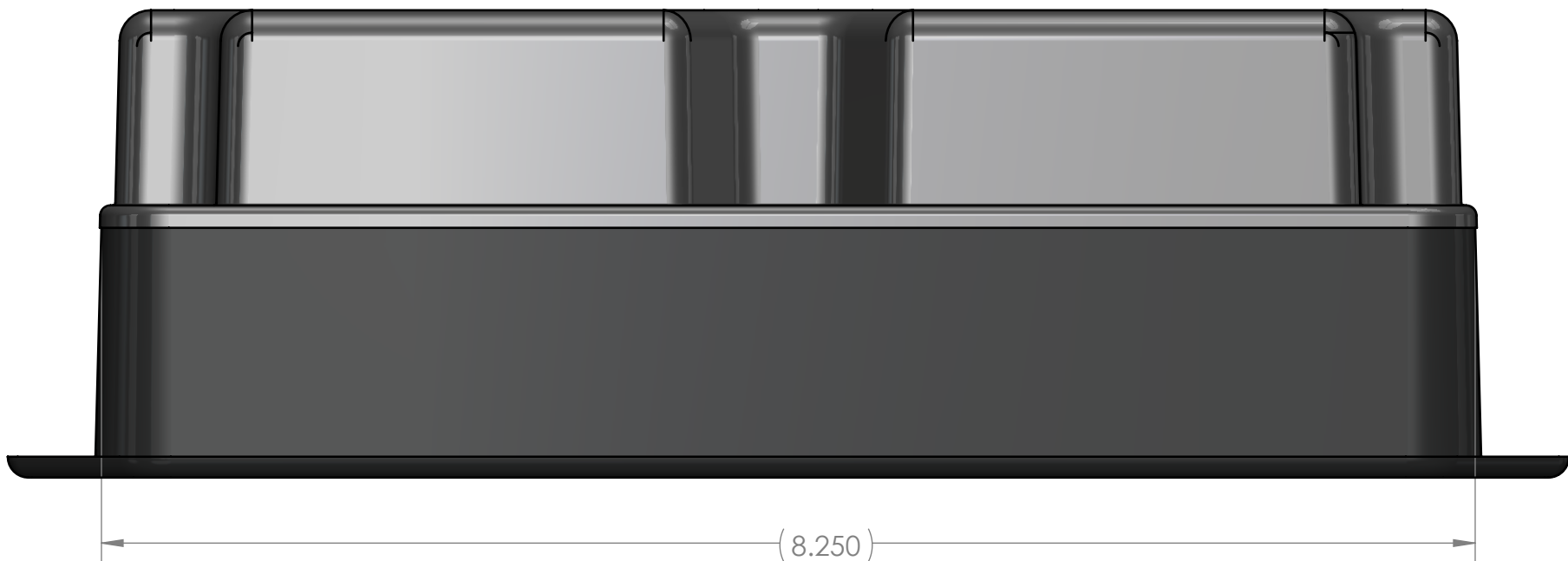
C

B

A

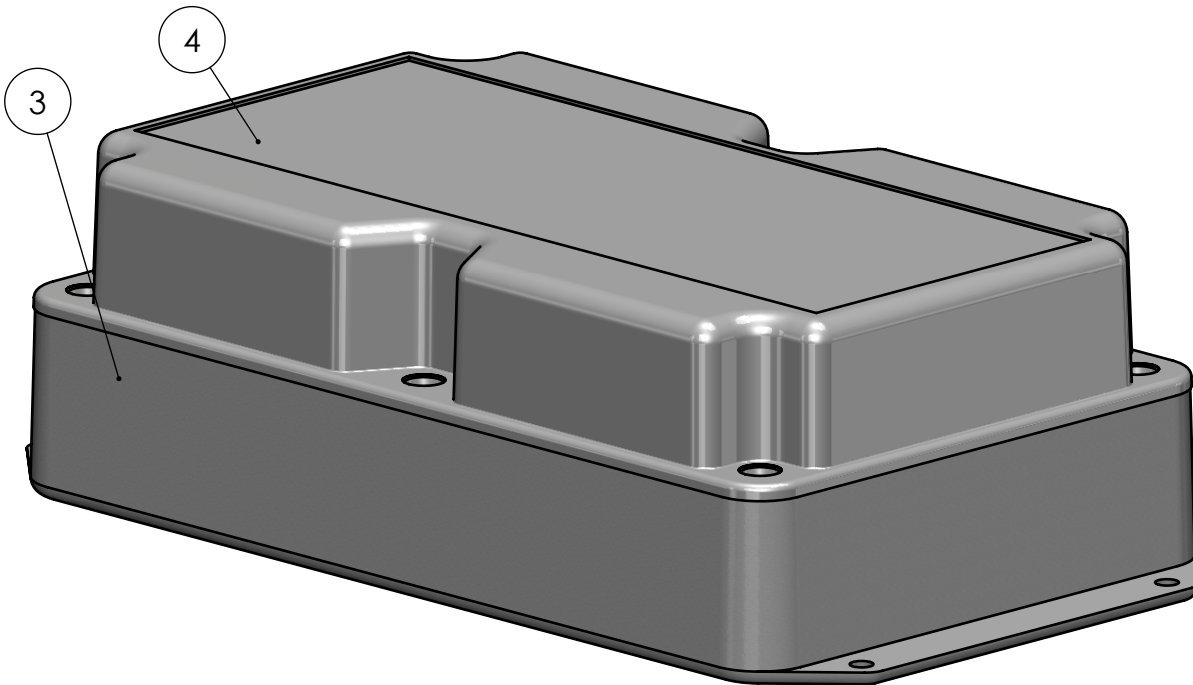


SECTION A-A

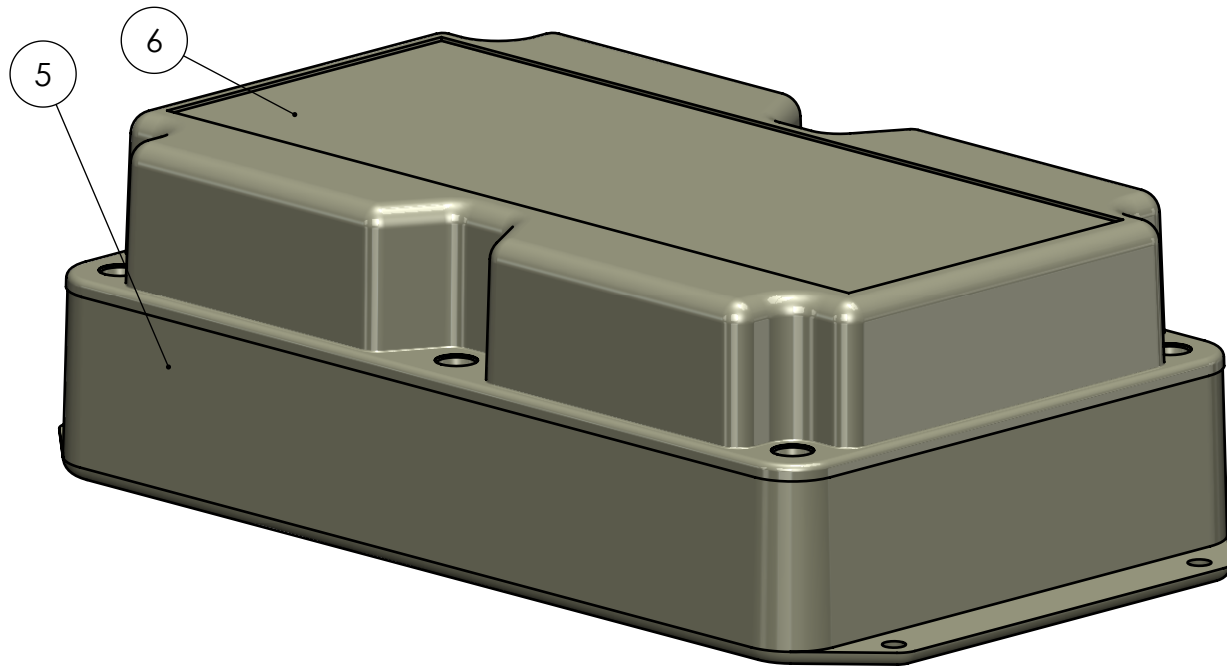


DC-57B-PCB:
PCB TEMPLATE (REF. ONLY)

DC-59FMMR



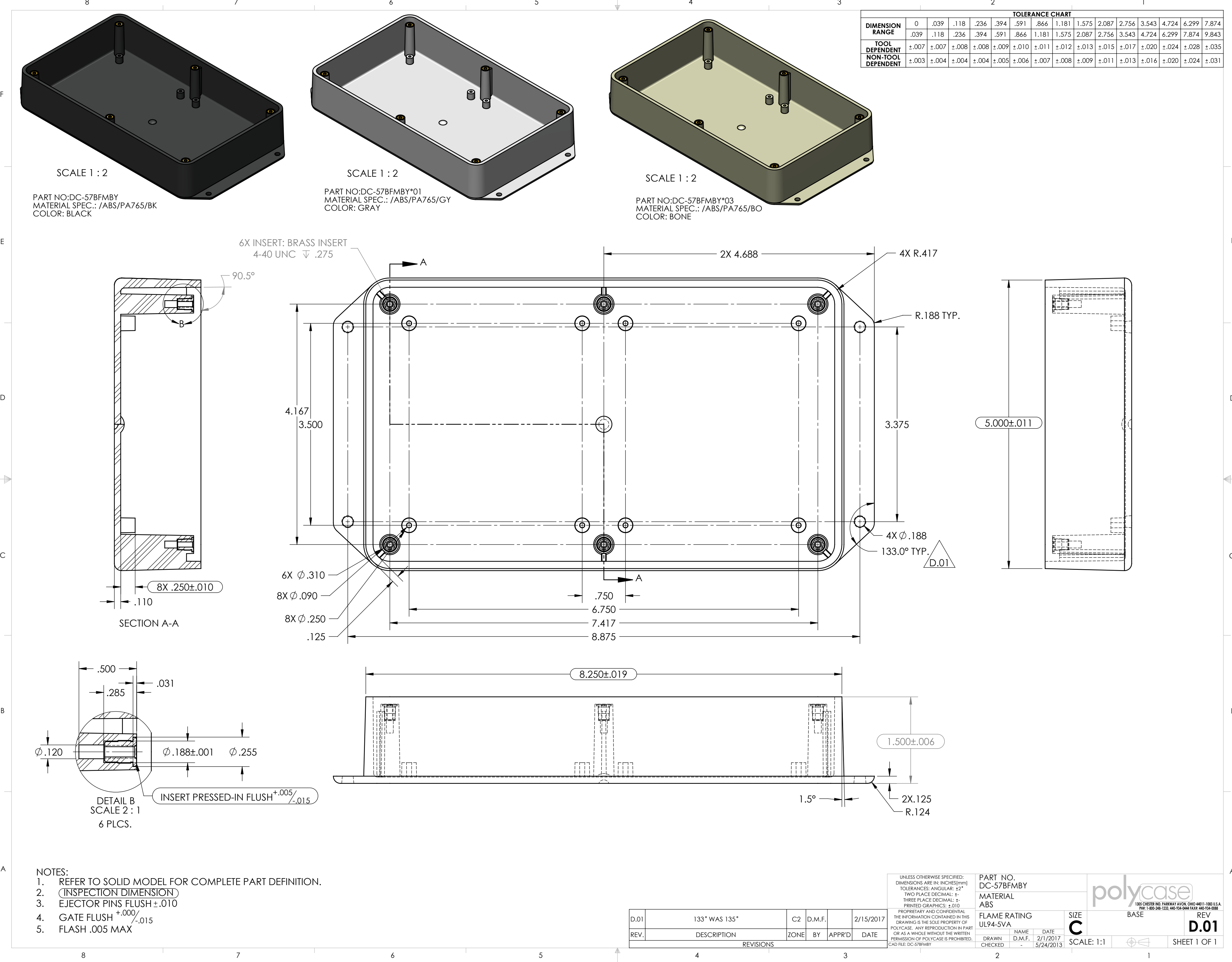
DC-59FMMR*01



DC-59FMMR*03

REV.	DESCRIPTION	ZONE	BY	APPR'D	DATE
REVISIONS					

UNLESS OTHERWISE SPECIFIED: DIMENSIONS ARE IN: INCHES[mm] TOLERANCES: ANGULAR: ±2° TWO PLACE DECIMAL: ±.010 THREE PLACE DECIMAL: ±.005 PRINTED GRAPHICS: ±.010		PART NO. DC-59FMMR MATERIAL		<div>polycase</div> <div>1305 CHESTER RD. PARKWAY AVON, OHIO 44011-1083 U.S.A. PH: 1-800-248-1233, 440-934-0444 FAX: 440-934-0088</div>		REV -	
PROPRIETARY AND CONFIDENTIAL THE INFORMATION CONTAINED IN THIS DRAWING IS THE SOLE PROPERTY OF POLYCASE. ANY REPRODUCTION IN PART OR AS A WHOLE WITHOUT THE WRITTEN PERMISSION OF POLYCASE IS PROHIBITED. CAD FILE: DC-59FMMR		FLAME RATING		SIZE C		SCALE: 1:1	
		DRAWN		NAME		DATE	
		CHECKED		D.M.F.		5/17/2017	
						12/31/2999	
						SHEET 1 OF 1	

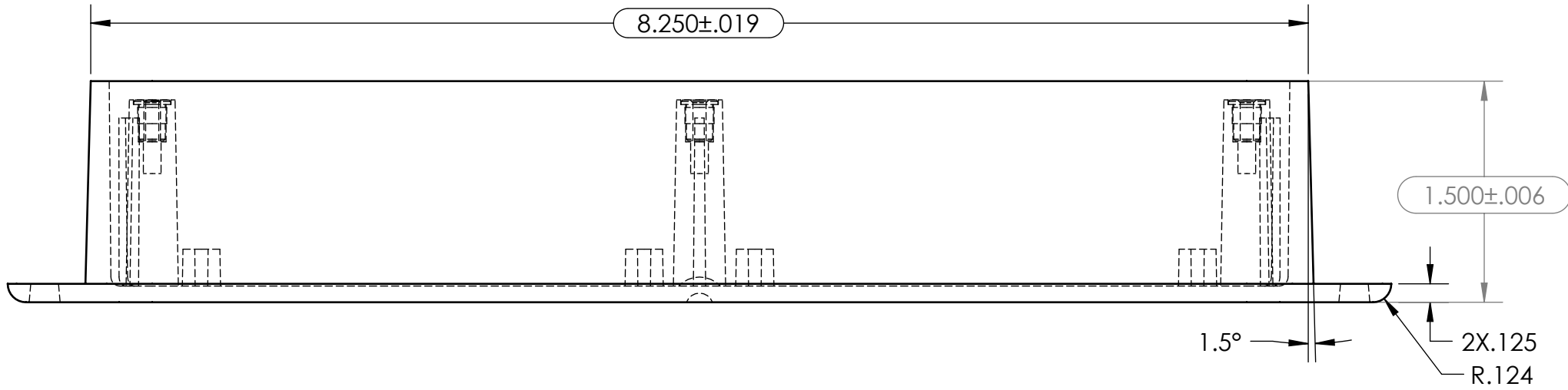
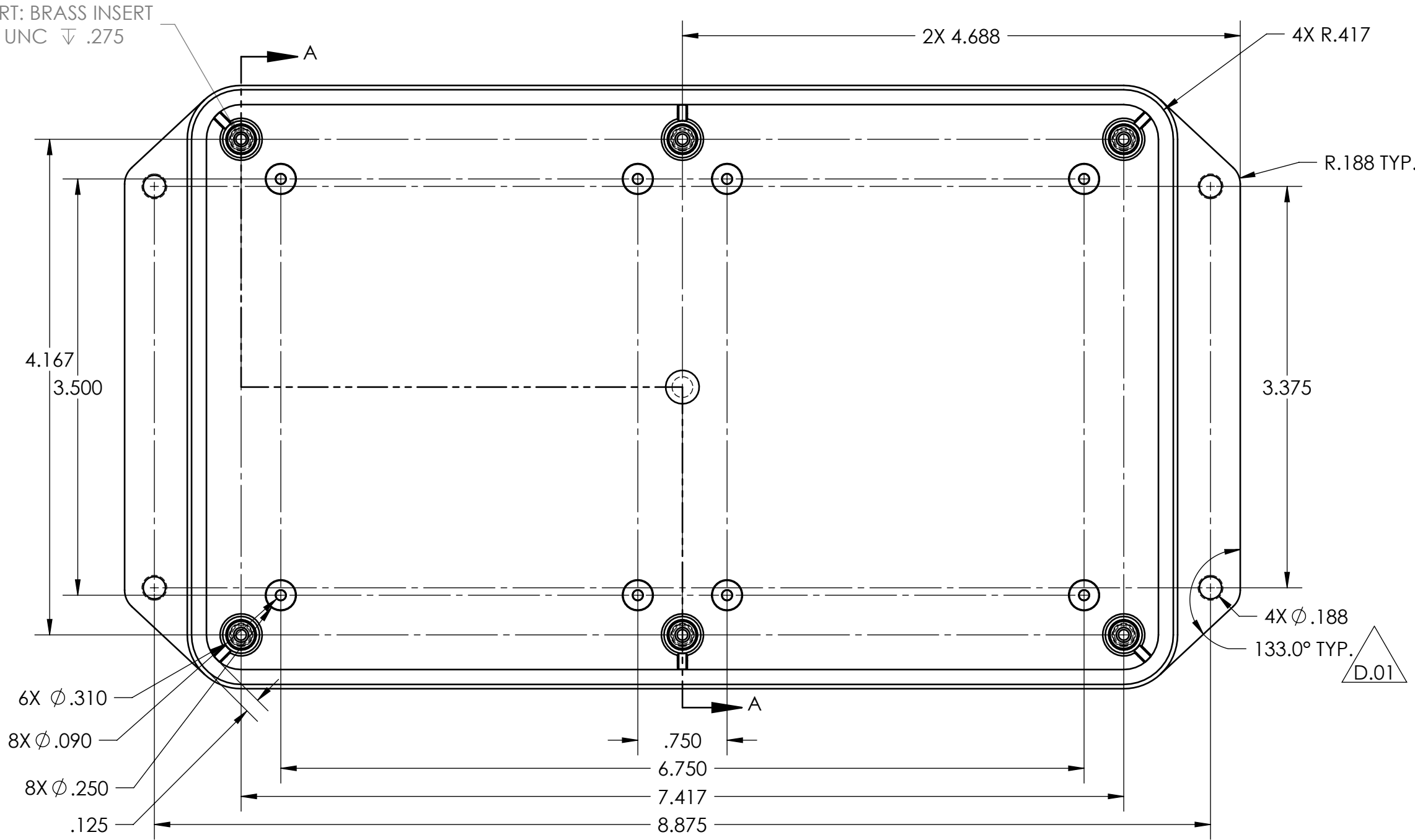
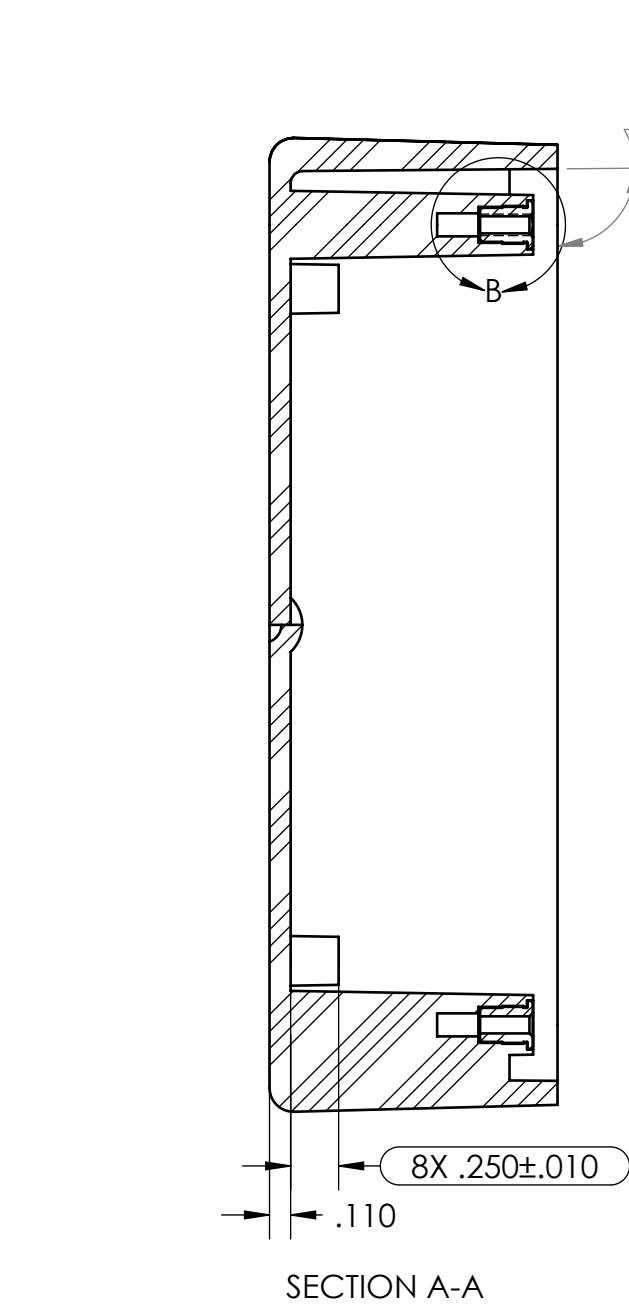
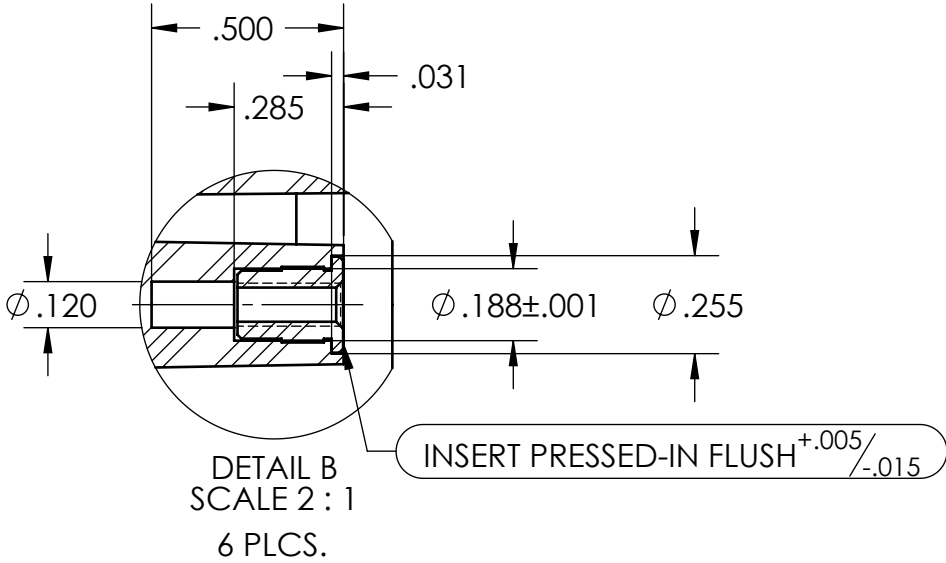


TOLERANCE CHART															
DIMENSION RANGE	0	.039	.118	.236	.394	.591	.866	1.181	1.575	2.087	2.756	3.543	4.724	6.299	7.874
	.039	.118	.236	.394	.591	.866	1.181	1.575	2.087	2.756	3.543	4.724	6.299	7.874	9.843
TOOL DEPENDENT	±.007	±.007	±.008	±.008	±.009	±.010	±.011	±.012	±.013	±.015	±.017	±.020	±.024	±.028	±.035
NON-TOOL DEPENDENT	±.003	±.004	±.004	±.004	±.005	±.006	±.007	±.008	±.009	±.011	±.013	±.016	±.020	±.024	±.031

PART NO:DC-57BFMBY
MATERIAL SPEC.: /ABS/PA765/BK
COLOR: BLACK

PART NO:DC-57BFMBY*01
MATERIAL SPEC.: /ABS/PA765/GY
COLOR: GRAY

PART NO:DC-57BFMBY*03
MATERIAL SPEC.: /ABS/PA765/BO
COLOR: BONE



- NOTES:
- REFER TO SOLID MODEL FOR COMPLETE PART DEFINITION.
 - (INSPECTION DIMENSION)
 - EJECTOR PINS FLUSH ±.010
 - GATE FLUSH +.000/-0.015
 - FLASH .005 MAX

REV.	DESCRIPTION	ZONE	BY	APPR'D	DATE
D.01	133° WAS 135°	C2	D.M.F.		2/15/2017

UNLESS OTHERWISE SPECIFIED:
DIMENSIONS ARE IN: INCHES[mm]
TOLERANCES: ANGULAR: ±2°
TWO PLACE DECIMAL: ±
THREE PLACE DECIMAL: ±
PRINTED GRAPHICS: ±.010
PROPRIETARY AND CONFIDENTIAL
THE INFORMATION CONTAINED IN THIS
DRAWING IS THE SOLE PROPERTY OF
POLYCASE. ANY REPRODUCTION IN PART
OR AS A WHOLE WITHOUT THE WRITTEN
PERMISSION OF POLYCASE IS PROHIBITED.
CAD FILE: DC-57BFMBY

PART NO. DC-57BFMBY	
MATERIAL ABS	
FLAME RATING UL94-5VA	
DRAWN CHECKED	NAME DATE 2/1/2017 5/24/2013

polycase

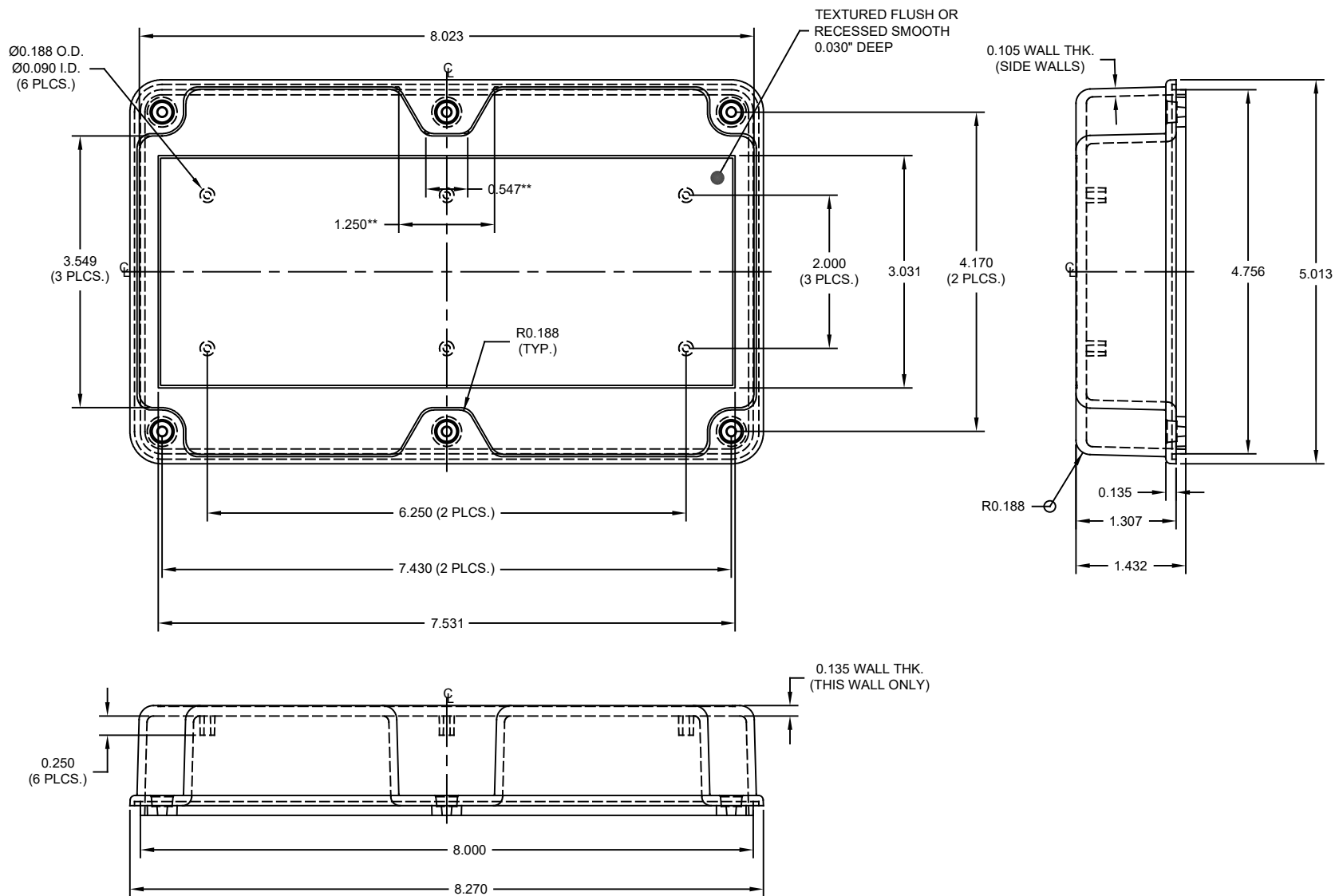
1305 CHESTER RD. PARKWAY AVON, OHIO 44011-1083 U.S.A.
PH: 1-800-248-1233, 440-934-0444 FAX: 440-934-0088

BASE

REV
D.01


SCALE: 1:1

SHEET 1 OF 1



NOTES:

- ** DIMENSION TO SHARP CORNER
- MOUNTING BOSSES ACCEPT A #4 SELF TAPPING OR THREAD FORMING SCREW

						DRWN BY B.B.	APP. BY	SCALE FULL	DATE: 01/17/00	
						JOB NO:	PRODUCT:			
						CUSTOMER:				
						DC-85CMB				
REV	DESCRIPTION	BY	CHK	DATE	TOLERANCES UNLESS OTHERWISE SPECIFIED X.XX ±.020 X.XXX ±.010	1055 CHERTER RD. PARKWAY AVON, OHIO 44011 U.S.A P.W. 44053-0411 2121 44053-0444 FAX 440-534-0388 THIS DRAWING AND THE INFORMATION CONTAINED HEREIN ARE THE PROPERTY OF POLYCASE AND IT IS NOT TO BE REPRODUCED, COPIED OR USED IN ANY MANNER WITHOUT THE INTEREST OF POLYCASE				
						TITLE: PRODUCT DETAIL DRAWING				

